

**Science**

 AAAS

**Epigenetic Transgenerational Actions of Endocrine Disruptors and Male Fertility**

Matthew D. Anway, *et al.*  
*Science* **308**, 1466 (2005);  
DOI: 10.1126/science.1108190

***The following resources related to this article are available online at [www.sciencemag.org](http://www.sciencemag.org) (this information is current as of November 28, 2007 ):***

**Updated information and services**, including high-resolution figures, can be found in the online version of this article at:

<http://www.sciencemag.org/cgi/content/full/308/5727/1466>

**Supporting Online Material** can be found at:

<http://www.sciencemag.org/cgi/content/full/308/5727/1466/DC1>

A list of selected additional articles on the Science Web sites **related to this article** can be found at:

<http://www.sciencemag.org/cgi/content/full/308/5727/1466#related-content>

This article **cites 24 articles**, 8 of which can be accessed for free:

<http://www.sciencemag.org/cgi/content/full/308/5727/1466#otherarticles>

This article has been **cited by** 136 article(s) on the ISI Web of Science.

This article has been **cited by** 39 articles hosted by HighWire Press; see:

<http://www.sciencemag.org/cgi/content/full/308/5727/1466#otherarticles>

This article appears in the following **subject collections**:

Development

<http://www.sciencemag.org/cgi/collection/development>

Information about obtaining **reprints** of this article or about obtaining **permission to reproduce this article** in whole or in part can be found at:

<http://www.sciencemag.org/about/permissions.dtl>

# Epigenetic Transgenerational Actions of Endocrine Disruptors and Male Fertility

Matthew D. Anway, Andrea S. Cupp,\* Mehmet Uzumcu,†  
Michael K. Skinner‡

Transgenerational effects of environmental toxins require either a chromosomal or epigenetic alteration in the germ line. Transient exposure of a gestating female rat during the period of gonadal sex determination to the endocrine disruptors vinclozolin (an antiandrogenic compound) or methoxychlor (an estrogenic compound) induced an adult phenotype in the  $F_1$  generation of decreased spermatogenic capacity (cell number and viability) and increased incidence of male infertility. These effects were transferred through the male germ line to nearly all males of all subsequent generations examined (that is,  $F_1$  to  $F_4$ ). The effects on reproduction correlate with altered DNA methylation patterns in the germ line. The ability of an environmental factor (for example, endocrine disruptor) to reprogram the germ line and to promote a transgenerational disease state has significant implications for evolutionary biology and disease etiology.

Treatments, such as irradiation and chemotherapy, and compounds, such as environmental toxins, pose a threat to the integrity of the genome. Studies have shown that these agents can result in genetic or developmental defects in the offspring or  $F_1$  generation from an exposed gestating mother. The ability of an external agent to induce a transgenerational effect requires stable chromosomal alterations or an epigenetic phenomenon such as DNA methylation (1). In the present study, transgenerational refers to a germline transmission to multiple generations, minimally to the  $F_2$  generation. Transgenerational effects of irradiation were the first to be identified through transmission of DNA mutations in the germ line to multiple generations (2), often associated with tumor formation. Chemotherapeutic treatments (3) and environmental toxins such as endocrine disruptors (4) can cause effects in the  $F_1$  generation, but they have not been shown to affect the  $F_2$  generation. Although no effects have been shown to be transgenerational, the potential impact of such transgenerational effects of endocrine disruptors has been discussed (5).

Epigenetic alterations that could lead to transgenerational transmission of specific genetic traits have recently been identified (1, 6). A transgenerational phenotype or ge-

netic trait requires a permanent reprogramming of the germ line. During mammalian germ cell development the methylation state of the genome is reprogrammed. As primordial germ cells (PGCs) migrate down the genital ridge, a demethylation starts and is complete on colonization in the early gonad (7, 8). Germ cells in the gonad then undergo remethylation in a sex-specific manner during gonadal sex determination (9). Although demethylation may not require the gonadal somatic cells, remethylation of the germ line appears to be dependent on association with the somatic cells in the gonads (7). Gonadal sex determination and testis development occur between embryonic days 12 and 15 (E12 to E15) in the rat (after midgestation in the human) and are initiated by the differentiation of precursor Sertoli cells in response to the testis-determining factor *Sry*. Aggregation of the precursor Sertoli cells, PGCs, and migrating mesonephros cells (precursor peritubular myoid cells) promotes testis morphogenesis and cord formation (10, 11). During the period of gonadal sex determination, the fetal testis contains steroid receptors and is a target for endocrine agents. The androgen receptor (AR) and estrogen receptor- $\beta$  (ER $\beta$ ) are present in Sertoli cells, precursor peritubular myoid cells, and germ cells at the time of cord formation (E14) (12, 13). Although steroids are not produced by the testis at this stage of development, estrogenic and androgenic substances have the ability to influence early testis cellular functions. Therefore, steroidal factors acting inappropriately at the time of gonadal sex determination potentially could reprogram the germ line through an epigenetic mechanism (altered DNA methylation) to cause the transgenera-

tional transmission of an altered phenotype or genetic trait.

The estrogenic and antiandrogenic endocrine disruptors used in the current study are methoxychlor and vinclozolin, respectively. Vinclozolin is a commonly used fungicide in the wine industry that is metabolized into more active (i.e., higher affinity binding to androgen receptor) compounds (14). Methoxychlor is used as a pesticide to replace DDT and is metabolized into active compounds with the ER $\alpha$  agonist, the ER $\beta$  antagonist, and antiandrogenic activity (15–17). Vinclozolin or methoxychlor exposure in the late embryonic or early postnatal period influences sexual differentiation, gonad formation, and reproductive functions in the  $F_1$  generation (14, 18, 19). Transient exposure (daily intraperitoneal injection of 100 or 200 mg/kg dose) of a gestating female rat to methoxychlor or vinclozolin between E8 and E15 promotes reduced spermatogenic capacity associated with increased spermatogenic cell apoptosis and decreased sperm number and motility in the adult  $F_1$  generation (20, 21). A similar exposure between E15 and E20 had no effect on the  $F_1$  generation testis (20, 21). These observations were extended in the present study by treating the gestating mother with vinclozolin.  $F_1$  generation male rats were mated with  $F_1$  generation females from different litters. Subsequent breeding continued for four generations with sufficient numbers of animals to avoid sibling inbreeding. Adult males from  $F_1$ ,  $F_2$ ,  $F_3$ , and  $F_4$  generations between postnatal days PND60 and PND180 were killed. Testes were isolated for histological examination, and caudal epididymal sperm were collected for sperm counts and motility measurements. Only the original gestating mother ( $F_0$ ) of the  $F_1$  generation received a transient endocrine disruptor treatment. Control groups of animals were bred in a similar manner after vehicle treatment (dimethylsulfoxide buffer alone injected) of the  $F_0$  gestating mother. Analysis of cellular apoptosis demonstrated a greater than two-fold increase in spermatogenic cell apoptosis in the vinclozolin treatment animals for the  $F_1$  to  $F_4$  generations (Fig. 1A). Sperm numbers were reduced minimally, 20%, and sperm forward motility was reduced about 25 to 35% for vinclozolin generation animals (Fig. 1, B and C). More than 90% of all males analyzed from all generations had the germ cell defect of increased spermatogenic cell apoptosis. Therefore, the frequency of the phenotype was >90% and did not decline between the  $F_1$  and  $F_4$  generations. A similar experiment was performed with methoxychlor. After transient embryonic methoxychlor exposure (E8 to E15), a similar phenotype was observed in both the  $F_1$  and  $F_2$  animals (fig. S1). Therefore, both vinclozolin and methoxychlor induced transgenerational defects in spermatogenic capacity and sperm viability.

Center for Reproductive Biology, School of Molecular Biosciences, Washington State University, Pullman, WA 99164-4231, USA.

\*Present address: Department of Animal Science, University of Nebraska, Lincoln, NE 68583-0908, USA.

†Present address: Department of Animal Science, Rutgers University, 84 Lipman Drive, New Brunswick, NJ 08901-8525, USA.

‡To whom correspondence should be addressed. E-mail: skinner@mail.wsu.edu

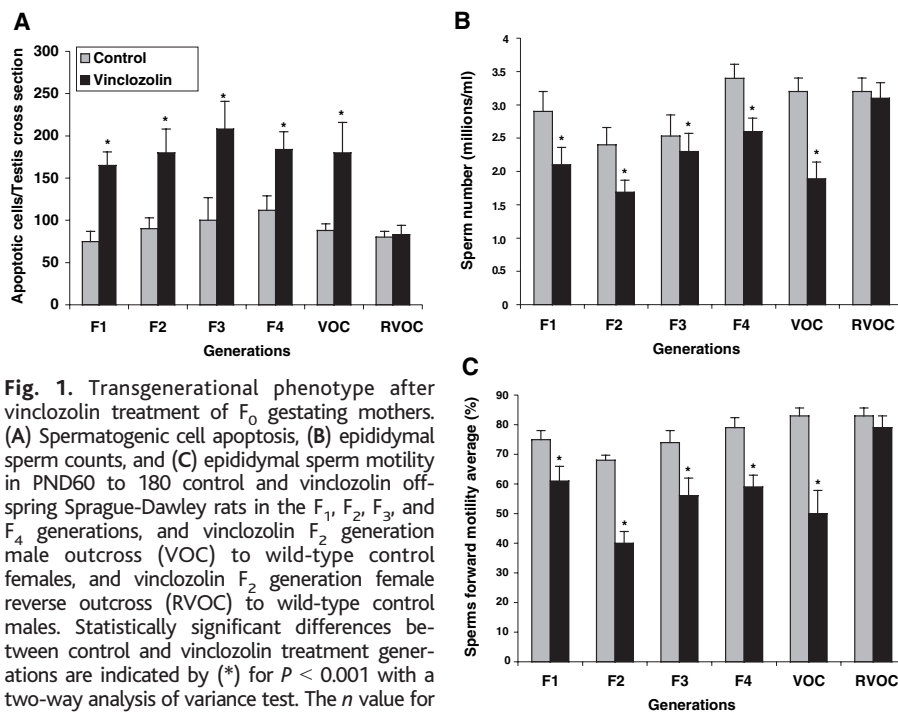
An outcross experiment was performed to determine whether the transgenerational phenotype was transmitted through the male germ line. Vinclozolin F<sub>2</sub> generation males (i.e., male progeny from an F<sub>0</sub> treated mother) were crossed with wild-type untreated control females, and the offspring were analyzed. The vinclozolin outcross (VOC) male progeny also had an increase in spermatogenic cell apoptosis and a decrease in sperm number and motility (Fig. 1). The reverse vinclozolin outcross (RVOC) with vinclozolin F<sub>2</sub> generation females and wild-type control males demonstrated no effect on the spermatogenic cells (Fig. 1). Therefore, the endocrine disruptor-induced transgenerational phenotype appears to be transmitted through the male germ line.

The morphology of the testes from control and treated rats was similar for all animals examined on PND60 in all F<sub>1</sub> to F<sub>4</sub> vinclozolin generations. Periodically, male rats older than 90 days of age developed complete infertility associated with small testis and severely reduced spermatogenesis, which was not seen in the PND60 animals. This occurred in 4 out of a total of 50 F<sub>1</sub>, F<sub>2</sub>, F<sub>3</sub>, and F<sub>4</sub> generation animals. Therefore, 8% of the vinclozolin transgenerational males developed complete infertility. None of the 42 control F<sub>1</sub> to F<sub>4</sub> generation animals were infertile. The testis histology for a representative infertile vinclozolin F<sub>3</sub> generation animal is shown in Fig. 2 and demonstrates a loss of normal spermatogenesis (no germ cells present) and abnormal seminiferous tubule morphology. The control F<sub>3</sub> male showed normal morphology with normal spermatogenesis. Although most of the animals older than 90 days of age were fertile, ~20% developed a dramatic decrease in spermatogenic capacity (50% of the tubules having impaired germ cell development) in all the generations examined. The VOC males also had increased infertility in ~20% of the animals over 90 days of age. The treated males that were fertile showed no change in litter size, newborn pup weights, or testis weight per body weight when compared with the control animals of any of the F<sub>1</sub> to F<sub>4</sub> generations examined. Nearly all the treated male progeny had the minimal phenotype of twofold increase in spermatogenic cell apoptosis, and the majority had a decrease in epididymal sperm number (Fig. 1, A and B).

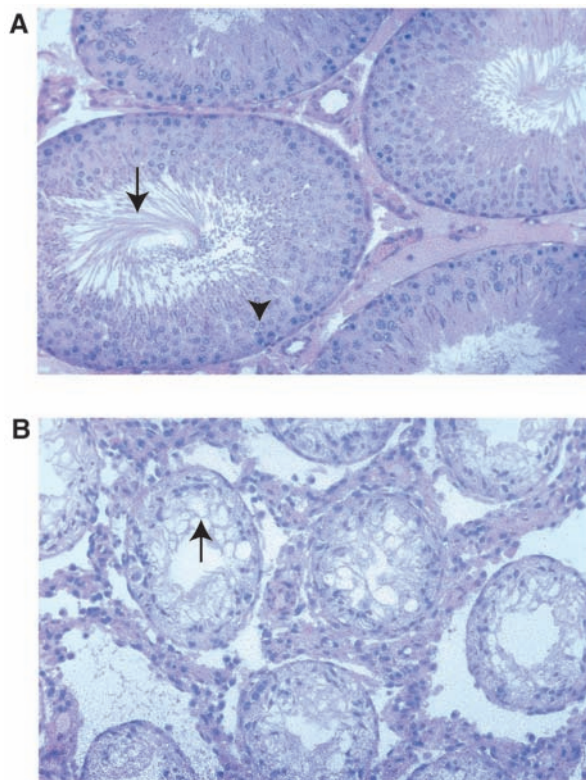
The transmission of this endocrine disruptor-induced testis phenotype in a transgenerational manner suggests an epigenetic alteration of the male germ line. The frequency observed for the phenotype (>90% of all males in all generations) cannot be explained through genetic DNA sequence mutational mechanisms. A high-frequency genetic (DNA sequence) mutation hotspot event would be an order of magnitude less than that observed (2, 22, 23).

Subsequent segregation of this mutation would likely result in a reduction of the phenotype frequency with each generation. In addition, the random nature of genetic (DNA sequence) mutations is generally more variable in the phenotype observed (2, 22, 23). In contrast, an epigenetic mechanism involving

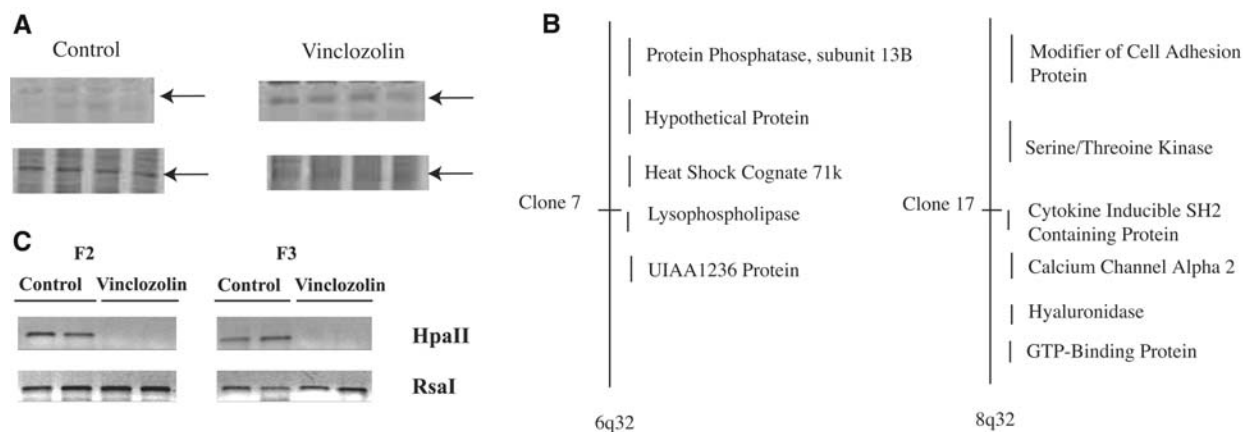
reprogramming of the germ line could result in the high frequency observed. In addition, the developmental period used for the endocrine disruptor exposure was during the re-methylation programming of the germ line. Although we cannot exclude the possibility of a novel genetic (DNA sequence) mutational



**Fig. 1.** Transgenerational phenotype after vinclozolin treatment of F<sub>0</sub> gestating mothers. (A) Spermatogenic cell apoptosis, (B) epididymal sperm counts, and (C) epididymal sperm motility in PND60 to 180 control and vinclozolin offspring Sprague-Dawley rats in the F<sub>1</sub>, F<sub>2</sub>, F<sub>3</sub>, and F<sub>4</sub> generations, and vinclozolin F<sub>2</sub> generation male outcross (VOC) to wild-type control females, and vinclozolin F<sub>2</sub> generation female reverse outcross (RVOC) to wild-type control males. Statistically significant differences between control and vinclozolin treatment generations are indicated by (\*) for *P* < 0.001 with a two-way analysis of variance test. The *n* value for each bar ranged between 10 and 30 animals. Detailed methods are provided in SOM.



**Fig. 2.** Testis histology from control (A) and vinclozolin treatment (B) 100-day-old F<sub>3</sub> generation animals, ×200 magnification. The vinclozolin F<sub>3</sub> generation male is a representative infertile male. Arrow in (A) identifies the tails of elongate spermatozoa in the seminiferous tubule lumen; arrowhead labels spermatocytes in the tubule epithelial layer. Arrow in (B) identifies the lack of germ cells in the seminiferous tubule. Methods are provided in SOM.



**Fig. 3.** DNA methylation analysis from control and vinclozolin offspring testis. **(A)** Representative gel images of the PCR-based methylation-sensitive Hpa II restriction enzyme digest analysis with representative band (arrow) affected in PND6 testis from control and vinclozolin treatment animals. Each lane represents a different individual animal ( $n = 4$ ). **(B)** Location of selected sequences on specific chromosomes for two representative DNA sequences with altered DNA methylation patterns termed clone 7 and 17. **(C)** Methylation-sensitive restriction enzyme PCR analysis of the methylation state of clone 17 (i.e., cytokine-inducible SH2 protein) gene in epididymal sperm from  $F_2$  and  $F_3$  generations from control and vinclozolin-treated animals. The bands presented are representative of sperm DNA collected from different animals from different litters and are consistent in four out of eight  $F_2$  animals and two out of five  $F_3$  animals analyzed. Methods are provided in SOM.

event, available information suggests an epigenetic mechanism is involved.

The only epigenetic mechanism currently known to influence germline transmission involves the methylation pattern of imprinted genes. This study does not investigate specific known imprinted genes, but focuses on the effects of the endocrine disruptor on the total genome. Fisher rats were used because of reduced polymorphisms, which made methylation studies more consistent and reproducible. PND6 testes were collected from male  $F_1$  progeny of vinclozolin-treated and control rats. A methylation-sensitive restriction enzyme digestion analysis involving a polymerase chain reaction (PCR)-based procedure was used to assess changes in DNA methylation patterns (Methods in SOM). Animals ( $n = 4$ ) from different litters of control and treated animals were analyzed. The vinclozolin-induced methylation patterns were similar in the replicate animals. About 25 different PCR products were identified that had altered DNA methylation patterns after the endocrine disruptor treatment. A representative change in methylation pattern is shown in Fig. 3A and fig. S2. These methylation experiments were extended by isolating and cloning several of the DNA fragments with apparent altered methylation. Two of the DNA fragments were sequenced and mapped to CpG-rich regions on chromosomes 6q32 and 8q32 (Fig. 3B). Clone 7 mapped to 6q32 and was within the lysophospholipase (LPLase) gene (accession NM144750). LPLase is a critical enzyme in the synthesis of important bioactive lipids and associated signaling (24). Clone 17 mapped to 8q32 and is within 1 kb of the start site of an uncharacterized protein termed cytokine-inducible SH2 protein (accession AJ243907). Whether the genes identified are causal factors or simply markers (i.e., downstream)

of the transgenerational epigenetic phenotype remains to be determined.

The epigenetic transgenerational transmission of the altered methylation pattern through the male germ line was investigated. PCR primers were designed for the flanking regions of the clone 17 gene, cytokine-inducible SH2 protein and were used to investigate altered methylation with the methylation-sensitive restriction enzyme digest procedure. Epididymal sperm were isolated from vinclozolin treatment  $F_2$  and  $F_3$  generation animals. As shown in Fig. 3C, the control animals had the PCR product, whereas the vinclozolin treatment  $F_2$  and  $F_3$  animals did not. The control Rsa I digest had a PCR product in all samples. Therefore, the vinclozolin treatment  $F_2$  and  $F_3$  generation sperm samples appeared to have altered DNA methylation in this clone 17 gene compared with control animal sperm. An alternate bisulfite DNA sequence analysis was used to confirm the methylation changes. Bisulfite analysis confirmed the altered methylations of the LPLase gene within the CpG island identified. This bisulfite altered sequence (fig. S3) was observed in ~25% of the vinclozolin treatment sperm DNA samples analyzed. A single-gene methylation event alone is not likely sufficient to promote the phenotype, but could cause alterations in a subset of genes. For example, 25 DNA sequences with altered methylation were identified, and if a random subset of genes with altered methylation promotes the phenotype, a 25% frequency for altered methylation of a single gene would be significant. Observations indicate that the endocrine disruptors can induce an epigenetic transgenerational change in the DNA methylation pattern of the male germ line. The epigenetic alterations observed involve both hypermethylation and hypomethylation events.

Two different endocrine disruptors, vinclozolin and methoxychlor, after a transient embryonic exposure at a critical time during gonadal sex determination (E8 to E15 in the rat), promoted an adult testis phenotype of decreased spermatogenic capacity and male infertility. No gross abnormality was observed in any other tissues examined, and serum testosterone levels were found to be normal in all the animals examined. This phenotype was found to be transgenerational and appears associated with altered DNA methylation of the male germ line. The phenotype was observed in nearly all males from all vinclozolin generations, such that a genetic mutation event (e.g., alteration in DNA sequence) is not likely to be a major factor. The frequency of a genetic mutation would be orders of magnitude less than the transmission frequency observed in the current study (2, 22, 23). Preliminary data demonstrate no major effect on the female, but a number of abnormal pregnancy outcomes were observed in pregnant females from offspring of vinclozolin-treated animals, but not controls. The abnormal phenotype has similarities to preeclampsia that include death, severe anemia, and blood cell defects. This study shows that environmental factors can induce an epigenetic transgenerational phenotype through an apparent reprogramming of the male germ line. It should be noted that the exposure levels used in these studies are higher than anticipated for environmental exposure; hence, future toxicology studies would be needed to ascertain the possible impact on animal populations.

**References and Notes**

1. V. Rakyar, E. Whitelaw, *Curr. Biol.* **13**, R6 (2003).
2. R. Barber, M. A. Plumb, E. Boulton, I. Roux, Y. E. Dubrova, *Proc. Natl. Acad. Sci. U.S.A.* **99**, 6877 (2002).
3. I. D. Morris, *Int. J. Androl.* **25**, 255 (2002).

4. C. M. Foran, B. N. Peterson, W. H. Benson, *Toxicol. Sci.* **68**, 389 (2002).
5. C. DeRosa, P. Richter, H. Pohl, D. E. Jones, *J. Toxicol. Environ. Health B Crit. Rev.* **1**, 3 (1998).
6. V. K. Rakyan et al., *Proc. Natl. Acad. Sci. U.S.A.* **100**, 2538 (2003).
7. P. Hajkova et al., *Mech. Dev.* **117**, 15 (2002).
8. G. Durcova-Hills, J. Ainscough, A. McLaren, *Differentiation* **68**, 220 (2001).
9. W. Reik, J. Walter, *Nat. Rev. Genet.* **2**, 21 (2001).
10. A. Jost, S. Magre, R. Agelopoulos, *Hum. Genet.* **58**, 59 (1981).
11. M. Buehr, S. Gu, A. McLaren, *Development* **117**, 273 (1993).
12. G. Majdic, M. R. Millar, P. T. Saunders, *J. Endocrinol.* **147**, 285 (1995).
13. H. O. Goyal et al., *Anat. Rec.* **249**, 54 (1997).
14. W. R. Kelce, E. Monosson, M. P. Gamcsik, S. C. Laws, L. E. Gray Jr., *Toxicol. Appl. Pharmacol.* **126**, 276 (1994).
15. A. M. Cummings, *Crit. Rev. Toxicol.* **27**, 367 (1997).
16. K. W. Gaido et al., *Endocrinology* **140**, 5746 (1999).
17. W. R. Kelce, C. R. Lambright, L. E. Gray Jr., K. P. Roberts, *Toxicol. Appl. Pharmacol.* **142**, 192 (1997).
18. J. S. Fisher, *Reproduction* **127**, 305 (2004).
19. R. E. Chapin et al., *Fundam. Appl. Toxicol.* **40**, 138 (1997).
20. A. S. Cupp et al., *J. Androl.* **24**, 736 (2003).
21. M. Uzumcu, H. Suzuki, M. K. Skinner, *Reprod. Toxicol.* **18**, 765 (2004).
22. B. S. Shi, Z. N. Cai, J. Yang, Y. N. Yu, *Mutat. Res.* **556**, 1 (2004).
23. H. Dong et al., *Biochemistry* **43**, 15922 (2004).
24. A. Tokumura, *J. Cell. Biochem.* **92**, 869 (2004).
25. We acknowledge the technical contributions of I. Sadler-Riggleman, S. Rekow, and B. Johnston and the assistance of H. Suzuki with the methylation PCR procedure. This research was supported in part by a grant to M.K.S. from the U.S. Environmental Protection Agency's Science to Achieve Results (STAR) program involving endocrine disruptors.

**Supporting Online Material**  
[www.sciencemag.org/cgi/content/full/308/5727/1466/DC1](http://www.sciencemag.org/cgi/content/full/308/5727/1466/DC1)  
 Materials and Methods  
 Figs. S1 to S3  
 References and Notes

2 December 2004; accepted 22 March 2005  
 10.1126/science.1108190

# Kinesin and Dynein Move a Peroxisome in Vivo: A Tug-of-War or Coordinated Movement?

Comert Kural,<sup>1</sup> Hwajin Kim,<sup>3</sup> Sheyum Syed,<sup>2</sup> Gohta Goshima,<sup>4</sup> Vladimir I. Gelfand,<sup>3\*</sup>† Paul R. Selvin<sup>1,2,‡</sup>

We used fluorescence imaging with one nanometer accuracy (FIONA) to analyze organelle movement by conventional kinesin and cytoplasmic dynein in a cell. We located a green fluorescence protein (GFP)-tagged peroxisome in cultured *Drosophila* S2 cells to within 1.5 nanometers in 1.1 milliseconds, a 400-fold improvement in temporal resolution, sufficient to determine the average step size to be ~8 nanometers for both dynein and kinesin. Furthermore, we found that dynein and kinesin do not work against each other in vivo during peroxisome transport. Rather, multiple kinesins or multiple dyneins work together, producing up to 10 times the in vitro speed.

Conventional kinesin (kinesin-1) and cytoplasmic dynein are microtubule-dependent molecular motors responsible for organelle trafficking and cell division. The long-distance organelle transport within a cell occurs bidirectionally along the microtubule tracks. Plus (+) end directed kinesins carry the cargo to the cell periphery whereas minus (–) end directed dyneins bring the cargo back.

In vitro studies using optical traps (1) and single-molecule fluorescence imaging (2) have provided insight into how the microtubule motors work. Kinesin is a highly processive motor that can take hundreds of 8-nm steps,

with a load of up to 6 pN, before detaching from the microtubule (3). Optical trap and in vitro motility studies have shown that a dynein-dynactin complex is also processive (4) and that dynein has an 8-nm step size under a load of up to 1.1 pN (5).

These studies, however, do not address how kinesin and dynein cooperate to achieve intracellular bidirectional transport. Do they move a cargo by engaging in a “tug-of-war,” or is there a switch that turns off one or both of the motors? Do multiple motors of the same polarity act together or cooperatively (6–8)? Answering these questions requires observing the cargo molecules in vivo with high temporal and spatial resolution. In particular, the spatiotemporal resolution must be faster than the typical rate of moving at the physiological adenosine 5'-triphosphate (ATP) concentration.

We used fluorescence imaging with one nanometer accuracy (FIONA) (2, 9) inside a live cell to track GFP-labeled peroxisomes being carried by microtubule motors with 1.5-nm accuracy and 1-ms time resolution, thereby allowing in vivo ATP concentrations. We used cultured *Drosophila* S2 cells that constitutively express enhanced green fluorescence protein (EGFP) with a peroxisome-targeting

signal (10). Fluorescence images of peroxisomes, excited with total internal epifluorescence microscopy and labeled with numerous EGFP molecules, can be fit to a Gaussian function and then well-localized (Fig. 1). Figure 1 shows a cell in a bright-field image (treated as described below), a fluorescence image of the EGFP-peroxisomes, and a 1-ms point-spread-function of one peroxisome, which shows localization to 1.5 nm.

Most organelles use both microtubule motors and myosins for intracellular movement (11). To analyze the work of microtubule motors in the absence of myosin effects, we treated cells with 5  $\mu$ M cytochalasin D, a drug that caps barbed ends of actin filaments, resulting in the disappearance of long filaments and therefore inhibition of actomyosin-dependent movement. Normal S2 cells plated on a substrate coated with concanavalin A have a discoid shape (12). Upon the loss of the actin filament network, S2 cells grow thin processes that are filled with microtubules (Fig. 1), but have no F-actin cables detectable by fluorescent phalloidin staining (13). We analyzed the polarity of microtubules in these processes using cells expressing EGFP-tagged EB1 (12). EB1 is a protein that specifically binds to (+) ends of growing microtubules (14). We found that in thin processes (diameter  $\leq 1 \mu$ m), more than 90% of microtubules have (+) ends pointing away from the cell body (fig. S1). In contrast, in processes with a diameter  $>1 \mu$ m, only about 60% of microtubules have their (+) ends pointing away from the cell body, presumably due to a buckling of the microtubules inside the process. Consequently, only those peroxisomes moving in processes with a diameter  $<1 \mu$ m were analyzed (fig. S1).

Our measurements were performed at 10°C, and although low temperatures are known to favor microtubule depolymerization, immunofluorescent staining with antibody to tubulin demonstrated that the incubation at 10°C had no effect on the density or distribution of microtubules (fig. S2). We also determined the effect of microtubule lattice movements on peroxisome motion by performing fluorescence recovery after photo-

<sup>1</sup>Biophysics Center, <sup>2</sup>Physics Department, <sup>3</sup>Department of Cell and Structural Biology, University of Illinois, Urbana, IL 61801, USA. <sup>4</sup>Department of Cellular and Molecular Pharmacology, University of California, San Francisco, CA 94107, USA.

\*Present address: Department of Cell and Molecular Biology, Feinberg School of Medicine, Northwestern University, Chicago, IL 60611, USA.

†To whom correspondence should be addressed. Department of Cell and Molecular Biology, Northwestern University School of Medicine, 303 East Chicago Avenue, Ward 11-080, Chicago, IL 60611-3008, USA. E-mail: vgfelfand@northwestern.edu

‡To whom correspondence should be addressed. Loomis Lab of Physics, 1110 West Green Street, University of Illinois, Urbana, IL 61801, USA. E-mail: selvin@uiuc.edu